

AZUR™ Vascular Plug

Vascular Plug

PG Pro™

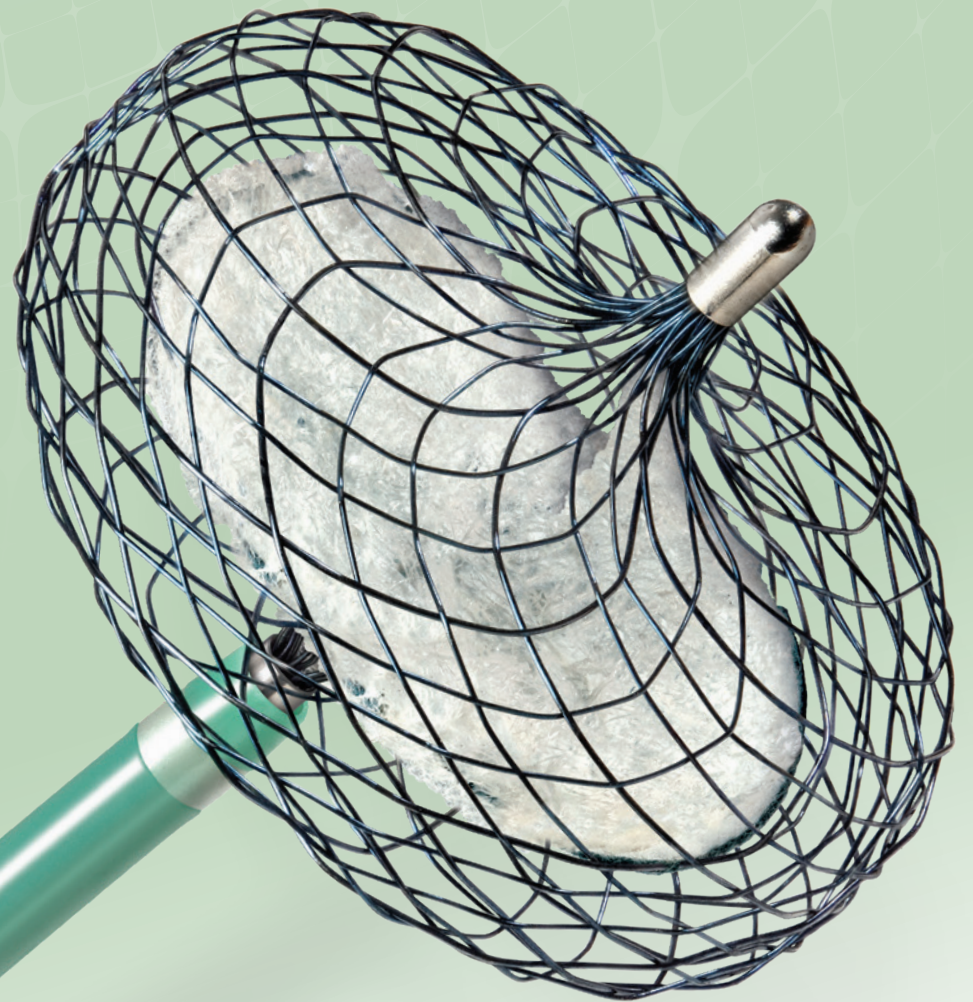
Peripheral Microcatheter



THIS IS
BIG.

REALLY **BIG.**

The first and only microcatheter and vascular
plug combination for arteries up to 8 mm¹



AZUR™ Vascular Plug

Vascular Plug

PG Pro™

Peripheral Microcatheter

PUSHING BOUNDARIES

TERUMO
INTERVENTIONAL
SYSTEMS

PRECISE, STABLE OCCLUSION IS WITHIN YOUR REACH

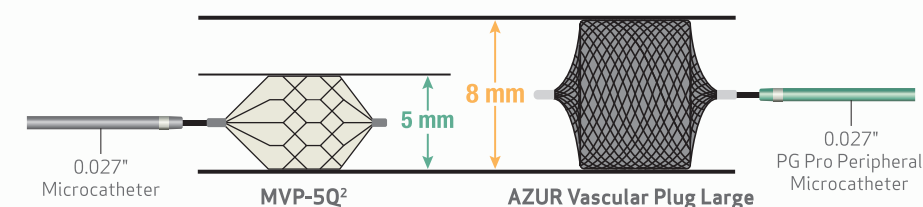
Next-generation technology for microcatheter delivery in arteries up to 8 mm¹

AZUR™ Vascular Plug

Vascular Plug

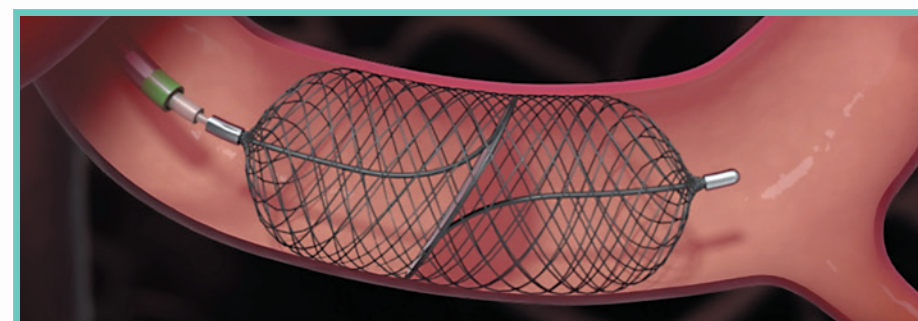
Maximum Target Artery Size

Largest in class sizing to treat a larger patient anatomy*



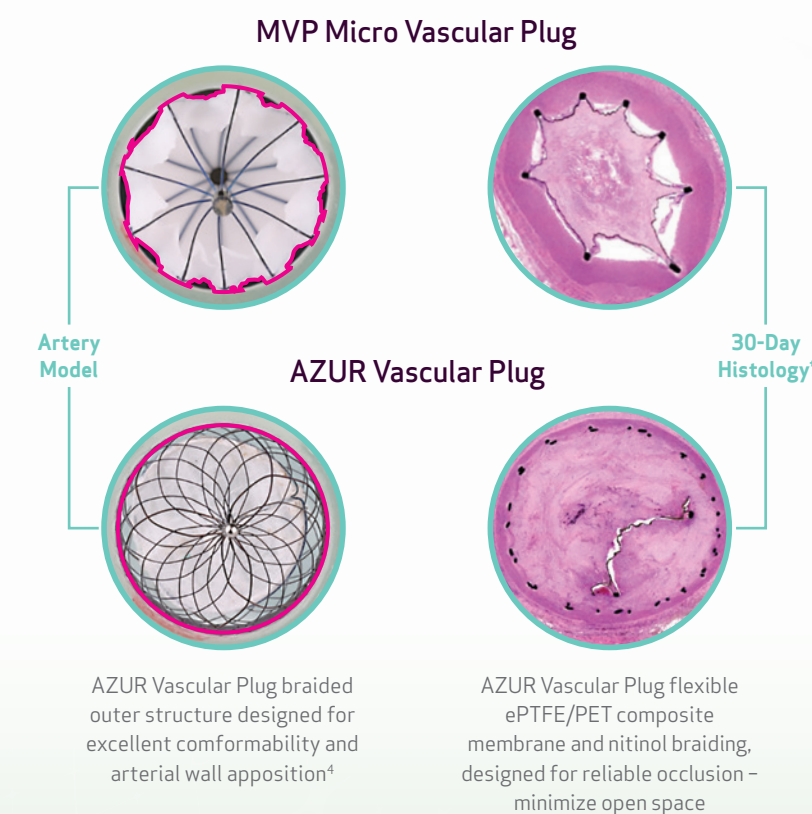
Designed to help achieve plug stability

Dynamic occlusive membrane reduces flow pressure on plug to support a stable mechanical occlusion.³



View peripheral embolization procedure with the AZUR Vascular Plug

Compare properties for balanced arterial wall apposition and occlusion



⁴Long-term GLP Animal Study, AZUR Vascular Plug

*Plugs deliverable through a .027" ID microcatheter

AZUR Vascular Plug

Radiopaque marker

Outer nitinol braid

Dynamic occlusive membrane

Immediate electrothermal detachment

PG Pro Peripheral Microcatheter

Flexible atraumatic distal tip

Radiopaque marker

Hydrophilic coated shaft with tungsten coil reinforcement and PTFE inner lining

Radiopaque marker

PG Pro™

Peripheral Microcatheter

Designed for use with AZUR Vascular Plug - enables precise placement and repositioning⁴

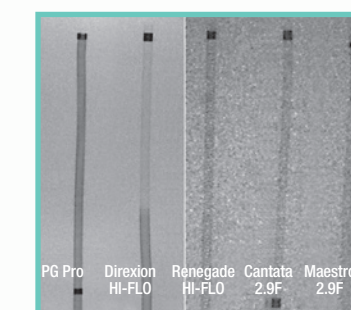
- Provides proximal pushability while maintaining distal flexibility⁶
- Excellent kink resistance with tight tungsten-coil construction for reliable embolic delivery^{7,8}
- Supports distal procedures and deployment with lengths up to 165 cm⁷

Achieves high flow rate to enable quality imaging^{4,5}

FLOW RATES ⁵	Model	Flow Rate (mL/sec)
PG Pro™ 140cm	5.7 mL/sec	
Direxion HI-FLO™ 130cm	5.6 mL/sec	
PG Pro™ 165cm	5.5 mL/sec	
Direxion HI-FLO™ 155cm	5.0 mL/sec	

⁵Flow rates are based on 1,200 psi.

Demonstrated radiopacity throughout the length of the microcatheter⁶



Immediate and reliable deployment at the push of a button

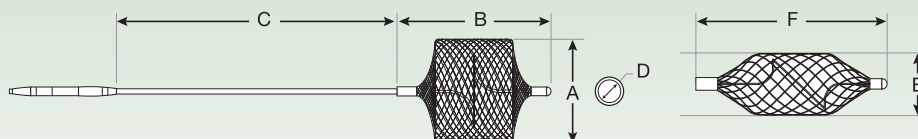
Eliminate the need for manual twisting during release¹



PUSHING BOUNDARIES

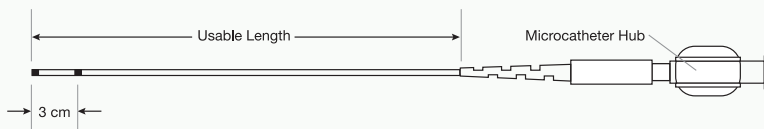
Terumo Interventional Systems is **committed to your success** with innovative procedural solutions and ongoing support for your most challenging cases.

We are relentlessly seeking new ways to help you achieve **better outcomes for more patients**.



AZUR™ PLUG SPECIFICATIONS

SIZE	PRODUCT CODE	IMPLANT OD (A)	IMPLANT UNCONSTRAINED LENGTH (B)	REFERENCE ARTERY SIZE (E)	REFERENCE IMPLANTED LENGTH (F)	WORKING LENGTH (C)	CATHETER SIZE (D)
Small	45-180500	5 mm	7.0 mm	2.5 mm	13.5 mm	175 cm	.027 in
				4.5 mm	8.5 mm		
Medium	45-180800	8 mm	7.5 mm	4.5 mm	16.0 mm		
				6.5 mm	12.0 mm		
Large	45-181000	10 mm	8.5 mm	6.5 mm	18.5 mm		
				8.0 mm	15.0 mm		



PG Pro™ PERIPHERAL MICROCATETER SPECIFICATIONS

PRODUCT CODE	USABLE LENGTH	OUTER DIAMETER (OD) (DISTAL / PROXIMAL)	INNER DIAMETER (ID)	MAX PRESSURE	RADIOPAQUE MARKERS	NOMINAL DISTAL HYDROPHILIC COATING LENGTH	MAX GUIDEWIRE	GUIDE CATHETER MINIMUM INNER DIAMETER
PGP28140STR	140 cm	2.8/2.8Fr / 0.92/0.94 mm	0.027"/ 0.69 mm	1,200 psi	2	60 cm	≤ 0.021"/ 0.53 mm	≥ 0.038"/0.97 mm Guidewire Compatible
PGP28165STR	165 cm					100 cm		

FIND OUT MORE ☎ Phone: 800.888.3786 🌐 terumo.com

References:

1. Data on file. 2. MVP Specifications UC201712681c. 3. AZUR Vascular Plug IFU 100074C 2020. 4. PG Pro Peripheral Microcatheter IFU 100063 Rev. C Revised 2020-09 5. Direxion HI-FLO Torqueable Microcatheter IFU. 90807618-01 Revised 2013-12. 6. Data on File at MicroVention TR20-078. 7. Data on File at MicroVention TR18-035. 8. Data on File at MicroVention TR19-117.

INDICATIONS FOR USE

The AZUR™ Vascular Plug is intended to reduce or block the rate of blood flow in arteries of the peripheral vasculature. The PG Pro™ Peripheral Microcatheter is intended for the peripheral vasculature for the infusion of diagnostic and therapeutic agents. Manufacturer: MicroVention, Inc., 1311 Valencia Avenue, Tustin, CA 92780 USA Distributed in US by Terumo Medical Corporation: 265 Davidson Avenue, Somerset, NJ 08873 USA

RX ONLY. Caution: Federal law restricts this device to sale by or on the order of a physician. The advertisement is directed to physicians only, and not to consumers. Refer to product labels and packaging insert for complete warnings, precautions, potential complications, and instructions for use. Products may not have regulatory approval in all countries. Please contact your local sales representative if you have questions about the availability of products in your area.

©2023 Terumo Medical Corporation. All rights reserved. The third-party trademarks used herein are trademarks of their respective owners. All brand names are trademarks or registered trademarks of Terumo. PM-06934

